



**THE SHOPPING DESTINATION
FOR MORE THAN 5000 RESIDENTS**

ABOUT ANANDAM SQUARE

MGH group brings to you Retail Complex in residential township Anandam Square under Haryana Government's plotted township policy "Deen Dayal Jan Awas Yojna"

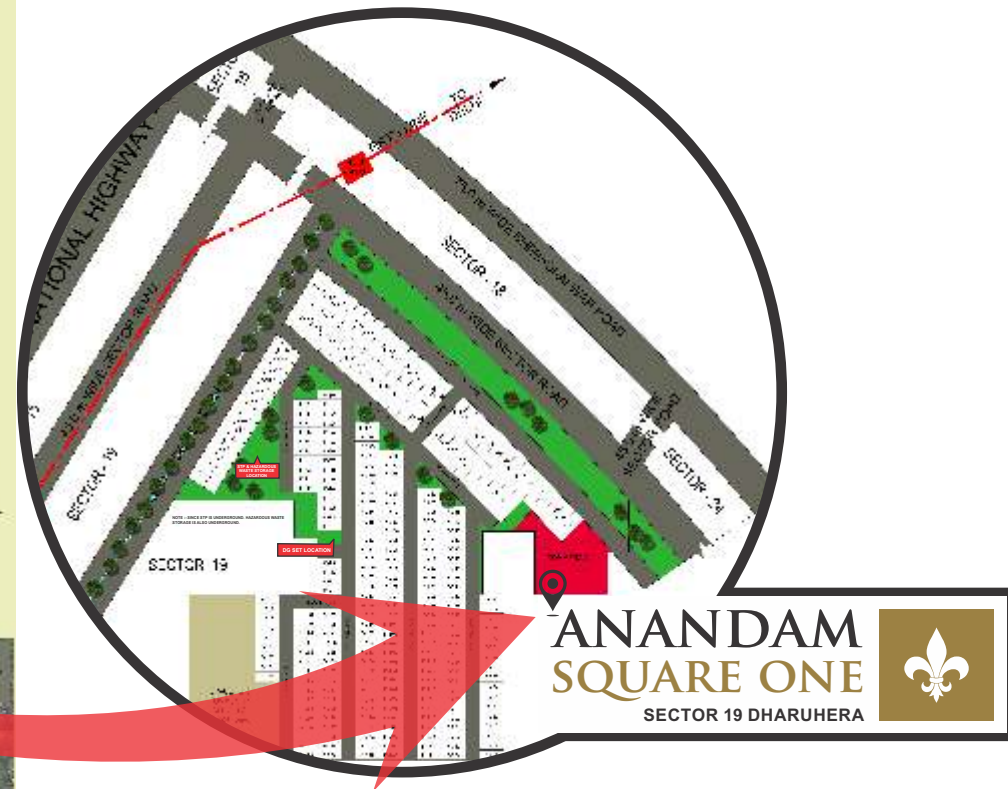
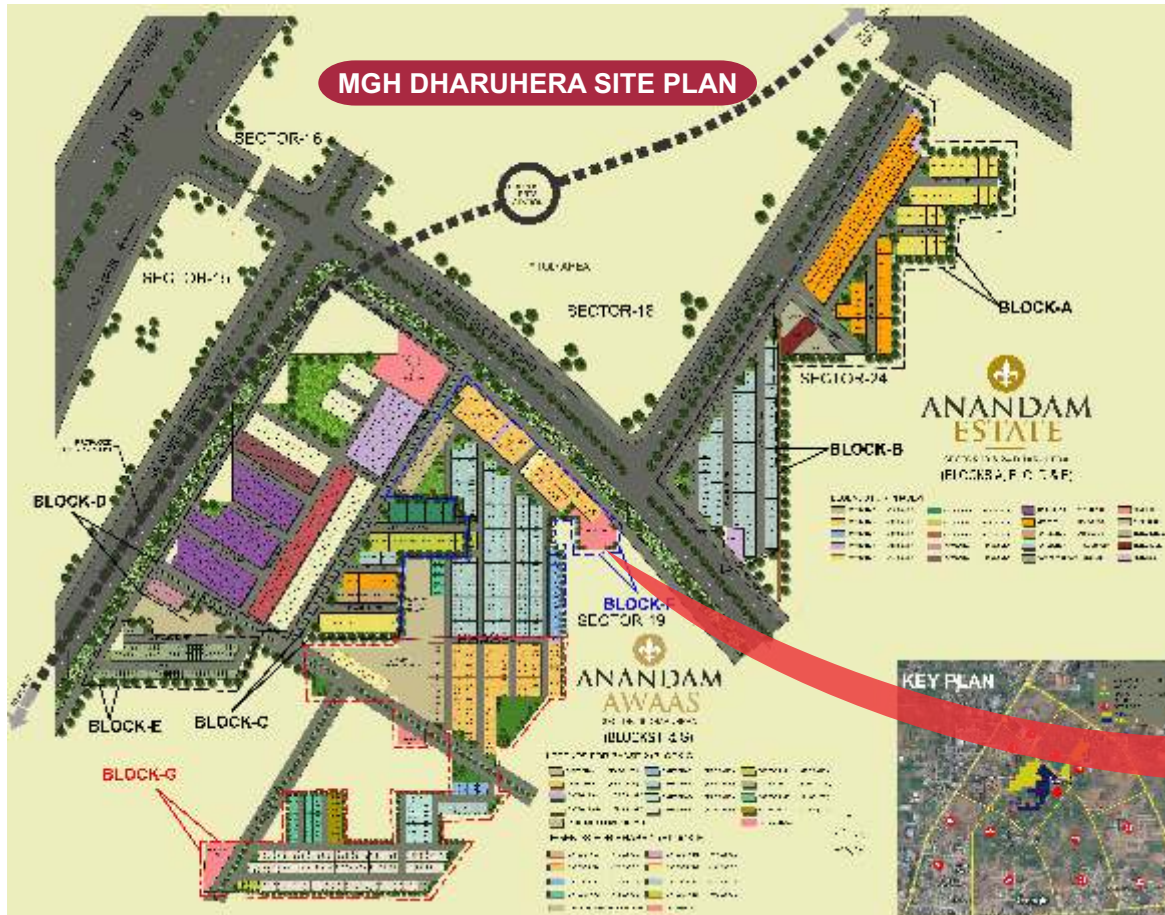
Sprawling across an area of 28.5 acres, the township offers a mix of residential plots, floors and shops.

Offering Shop sizes ranging from 114 to 1138 sq. Yds. Direct access form 45 mts sector Road, Connecting NH 48.

Anchor Shops, Space for Banks, Restaurant, Health Care etc.

Designed with impeccable planning and construction, Anandam Awaas makes for an idyllic abode and a place to experience comfortable living.

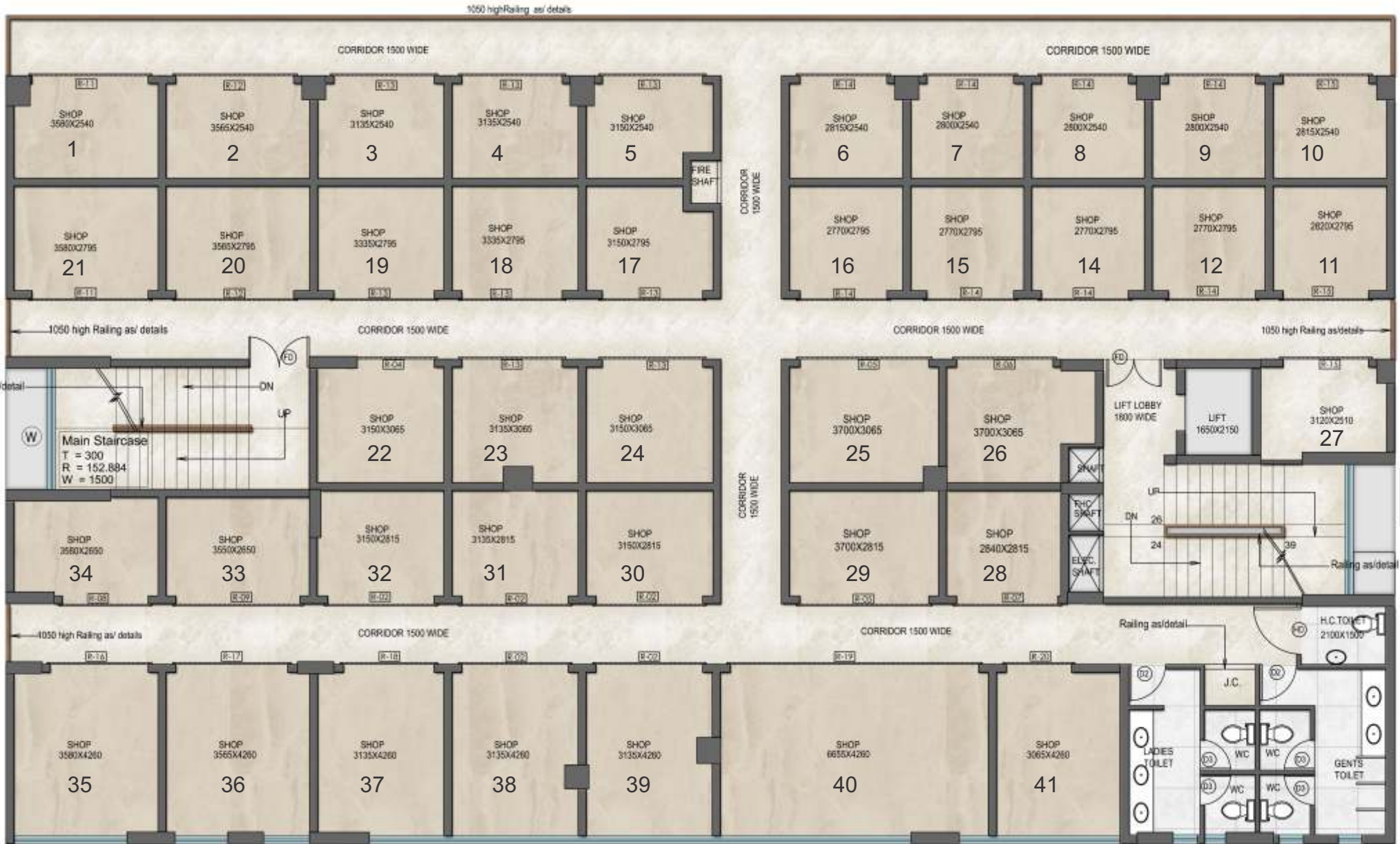
At a distance of just 45 kms from Delhi – Gurgaon toll and 25 kms drive from Gurgaon - Manesar Toll on NH-8, Anandam Awaas offers excellent connectivity.





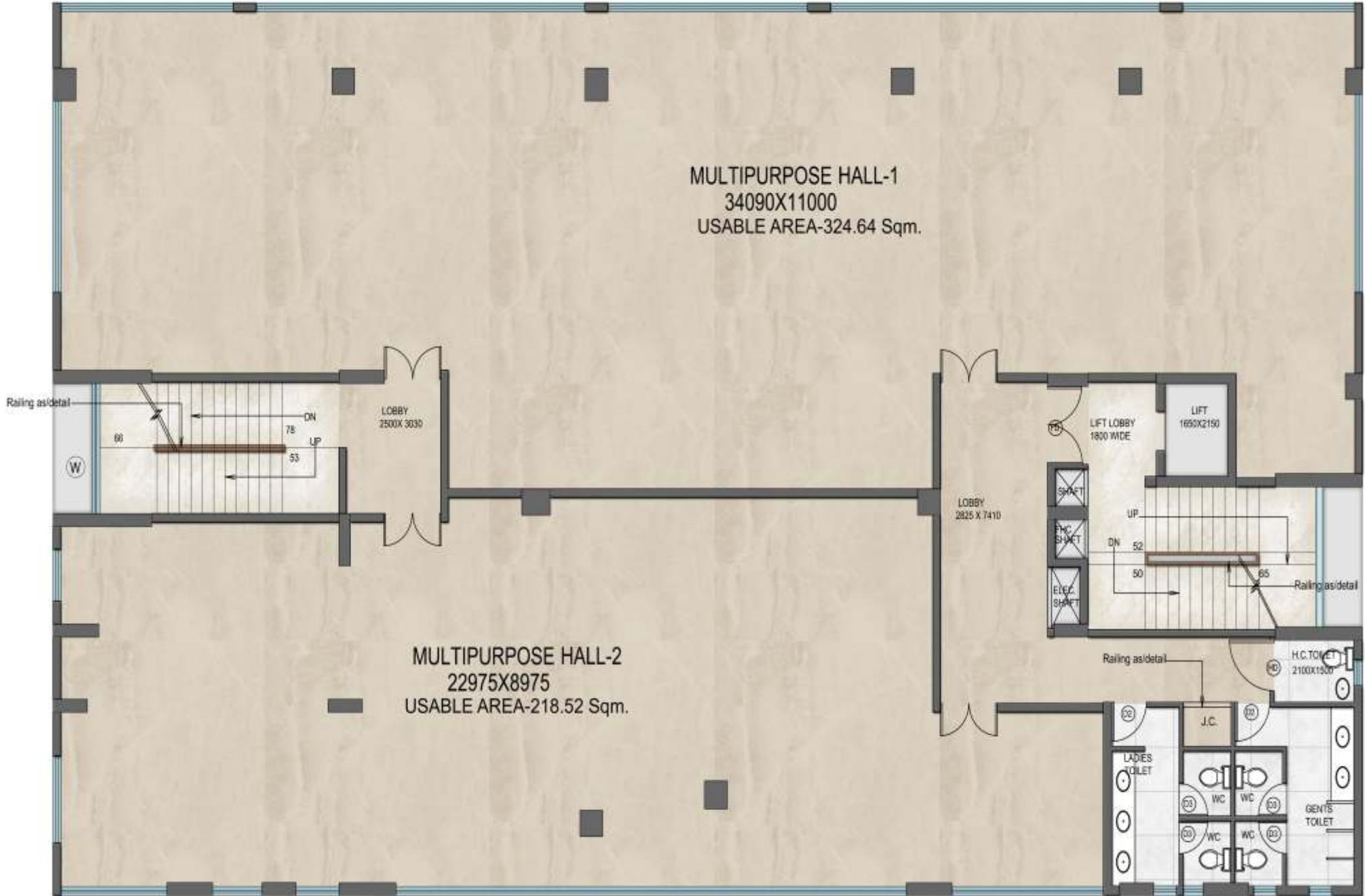
Fire Stair Case
 T = 300
 R = 152.884
 W = 1500

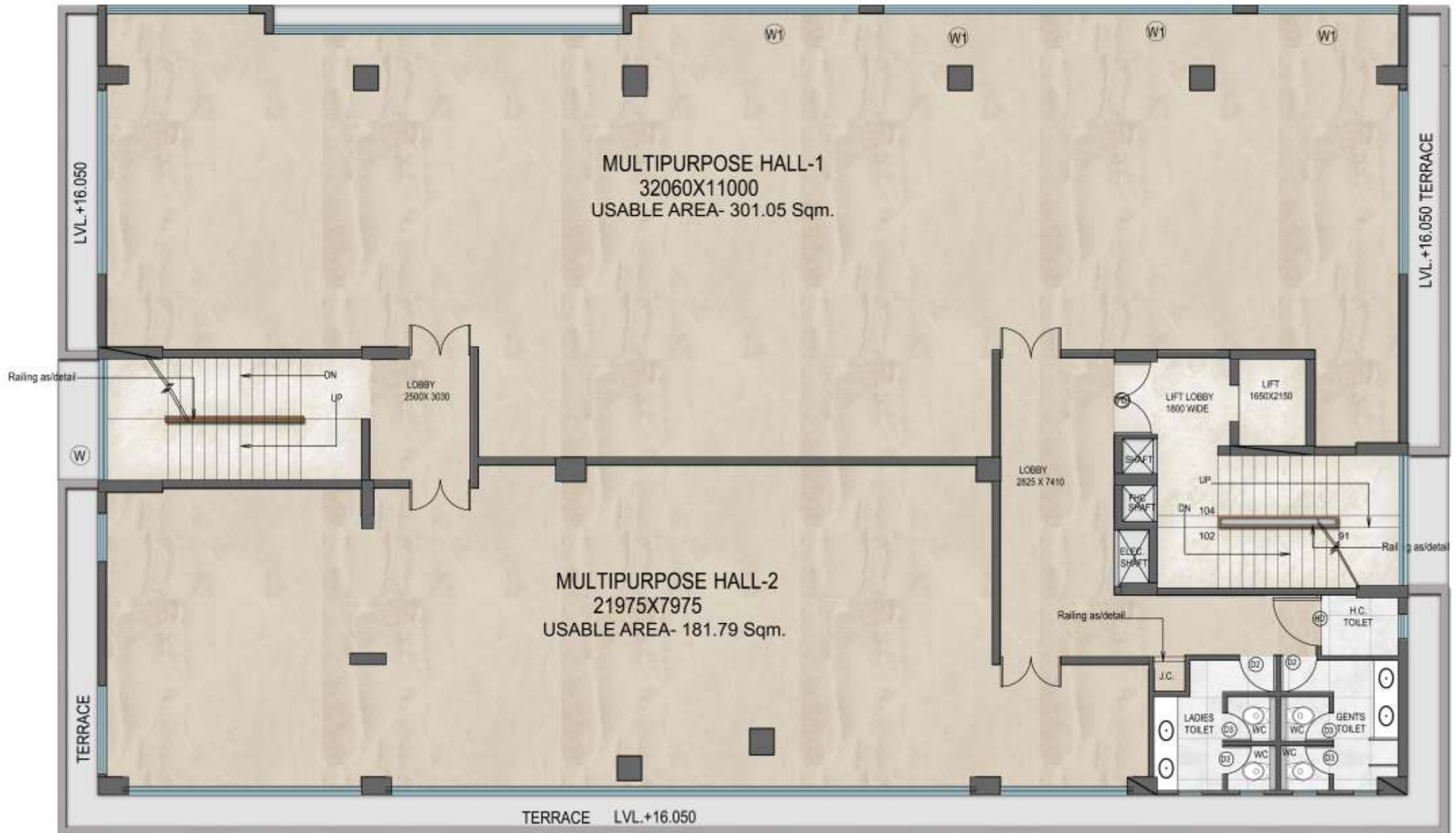
LVL. (-)1450

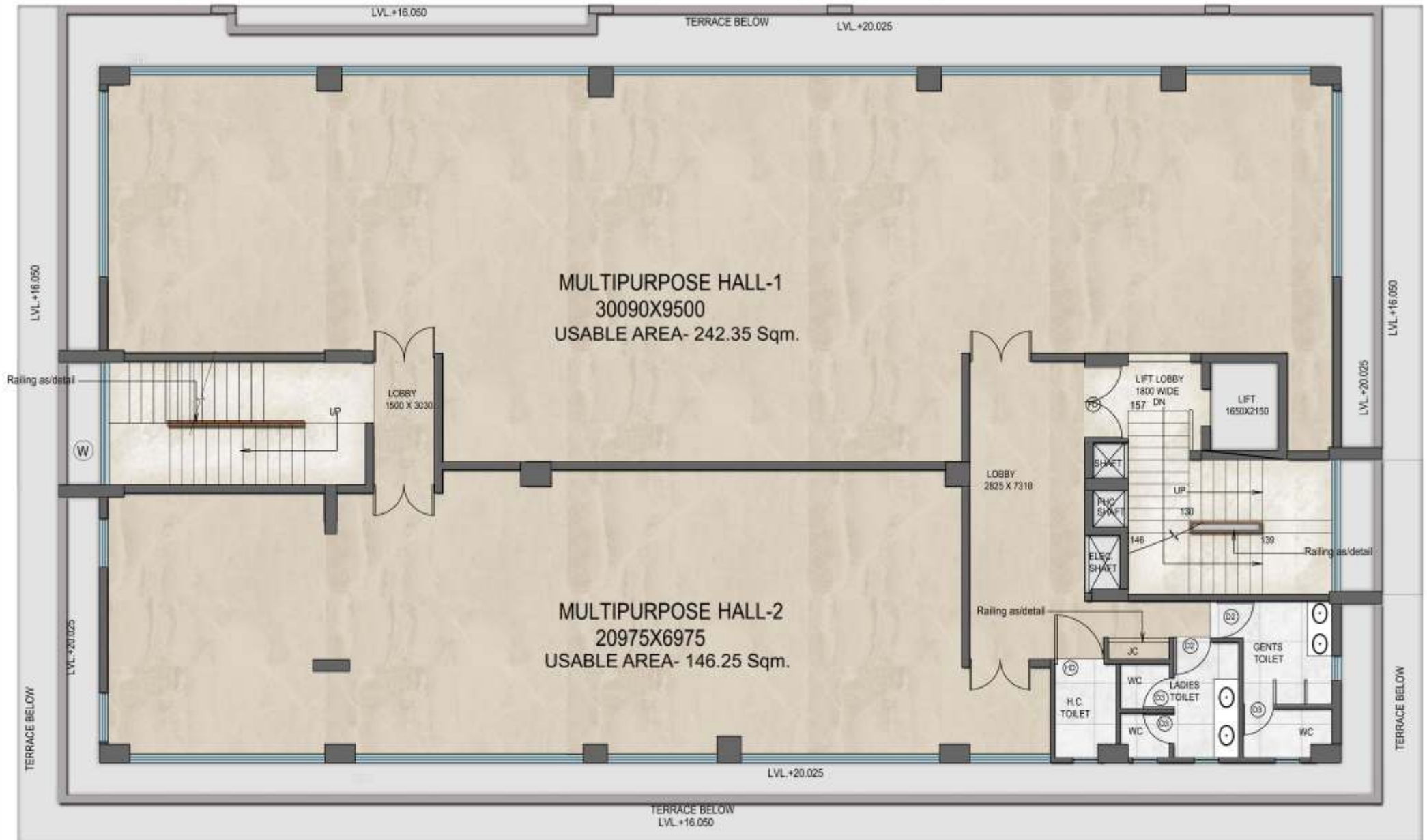


Fire Stair Case
T = 300
R = 152.884
W = 1500

SECOND & THIRD FLOOR SITE PLAN









KEY DRIVERS TO DHARUHERA'S GROWTH



DMIC

Delhi - Mumbai Industrial Corridor (DMIC) :

The future growth line of India which will provide high-speed connectivity between Delhi and Mumbai is in close proximity to the site.



RRTS

Regional Rapid Transit System (RRTS) Rail Corridor :

Extension of Delhi Metro is being planned from Delhi – Gurgaon – Dharuhera to Alwar.



INDU

Indian National Defense University (INDU) :

Sprawling 200 acres in Binola, Gurgaon, equipped with Training and Research Facilities on all aspects of national security.



HOTEL

Hotels :

Five Star Hotels within a striking radius.



SCHOOL

School :

Educational Institutes like DPS Rewari, Manipal Starex, International School, Modern Public School and Raman Munjal School are in the vicinity.



KMP

Kundli Manesar Palwal (KMP) Expressway :

KMP Connecting NH-1, NH-10, NH-8 & NH-2 bypassing the NCT Delhi is near completion.



TOD

Transit Oriented Development (TOD) :

Next to proposed TOD which means High Density Residential and Commercial area adjoining proposed metro station.



MBIR

Manesar & Bawal Investment Region (MBIR) :

Located in the Rewari District. Dedicated Freight Corridor Station would provide added value to the region. Also, IGI Airport will offer adequate air connectivity to the region.



HOSPITAL

Medical :

Reputed hospitals like Metro Heart Hospital, Apex Hospital etc. are in close proximity.



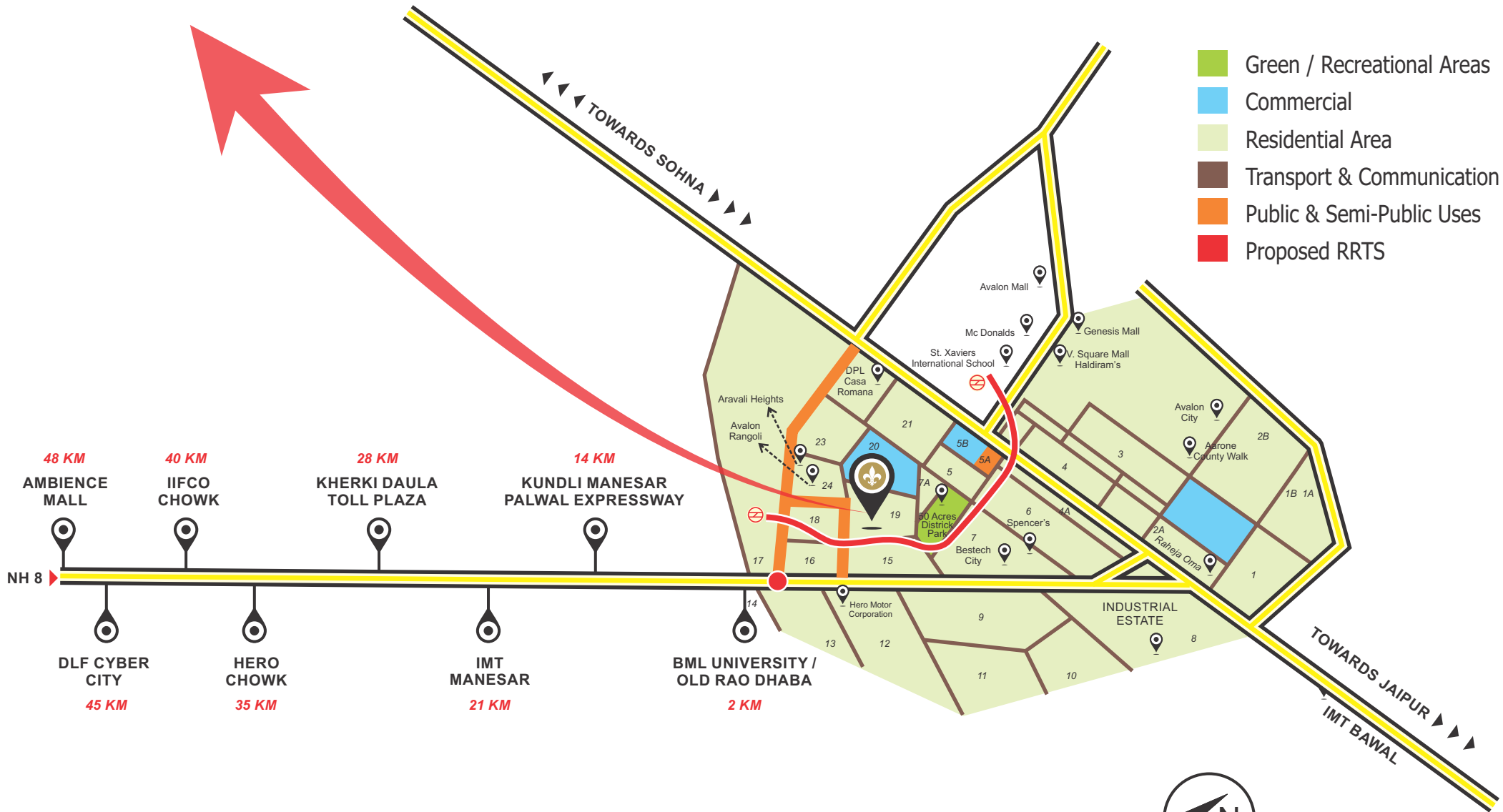
BML

Brij Mohan Lall Munjal University

A reputed university in close proximity.



LOCATION MAP



MAP NOT TO SCALE

On Booking	05% of Sale Price
Within 30 days of Booking	10% of Sale Price
Within 60 Days /Execution of Agreement whichever is earlier	10% of Sale Price
On completion of Excavation Work	10% of Sale Price
On completion of Basement roof slab	10% of Sale Price
On completion of Ground floor roof slab	10% of Sale Price
On completion of Second floor roof slab	10% of Sale Price
On completion of Third Floor slab	10% of Sale Price
On completion of Fifth Floor slab	10% of Sale Price
On completion of Internal and External & Plaster Work	10% of Sale Price
On Offer of Possession	05% of Sale Price Stamp Duty + All Other Charges

1. Cheque / DD is to be issued in favour of "MG Housing Pvt Ltd" Payable at Delhi / Gurgaon only.
2. Price are inclusive of External Development Charges (EDC) and EDC and Internal Development Charges (IDC).
3. Price does not includes Utility Connection Charges (UCC), Interest Free Maintenance Security Charges (IFMS) etc.
4. Price terms and conditions stated herein are merely indicative with a view to acquaint the applicant and are not exhaustive. For detailed terms and conditions please refer to Agreement to Sell.
5. Price & Offer are subject to Change / withdrawal without prior notice.
6. GST, Registration Charges & Other Taxes as applicable will be charged extra.